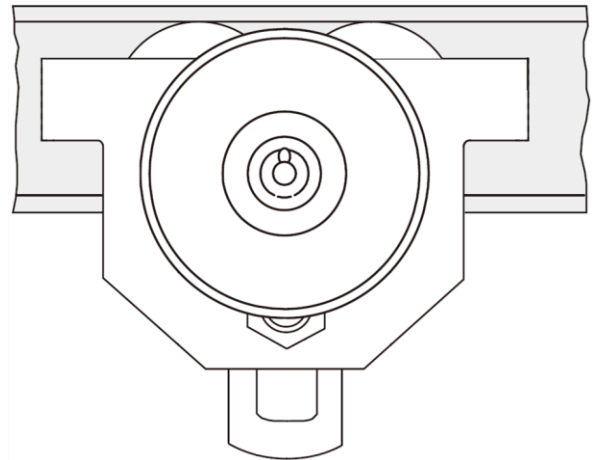
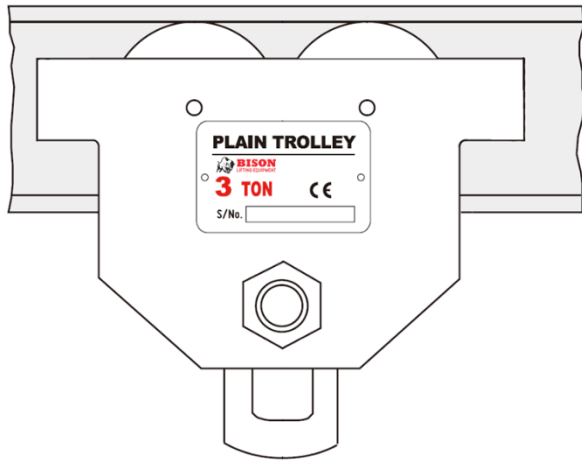




**BISON**  
LIFTING EQUIPMENT

# OPERATING AND INSTALLATION MANUAL





## **⚠ WARNING** IMPORTANT SAFETY INSTRUCTIONS

### To reduce risk of injury:

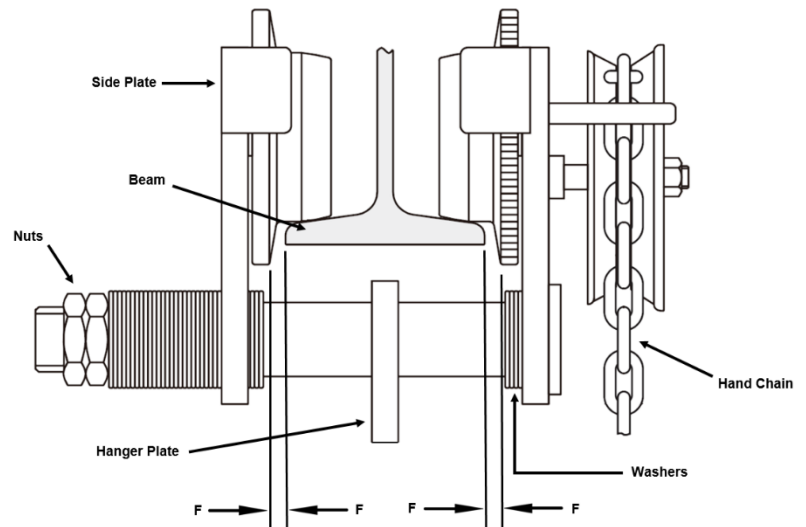
1. Beam must be properly installed and rated for anticipated loads.
2. Do NOT install trolley on beams of unknown rated capacity.
3. Do NOT install trolley on damaged or deformed beams.
4. Never subject trolley to a side pull or load. Load must be centered directly under the hoist / trolley assembly.
5. Make sure load is stable and secure before moving.
6. Do NOT exceed working load limit.
7. Always follow installation instructions.
8. Do NOT use if under the influence of drugs or alcohol.
9. Do NOT use Trolley if damaged or deformed in anyway.
10. Before attempting operation of this product, you should become thoroughly familiar with the warnings of both the trolley and the hoist attached.

## Introduction

This manual is provided by Bison lifting Equipment covering the safe operation and installation procedures for the Plain and Geared Trolleys. This manual contains instructions on installation and general operating procedures.

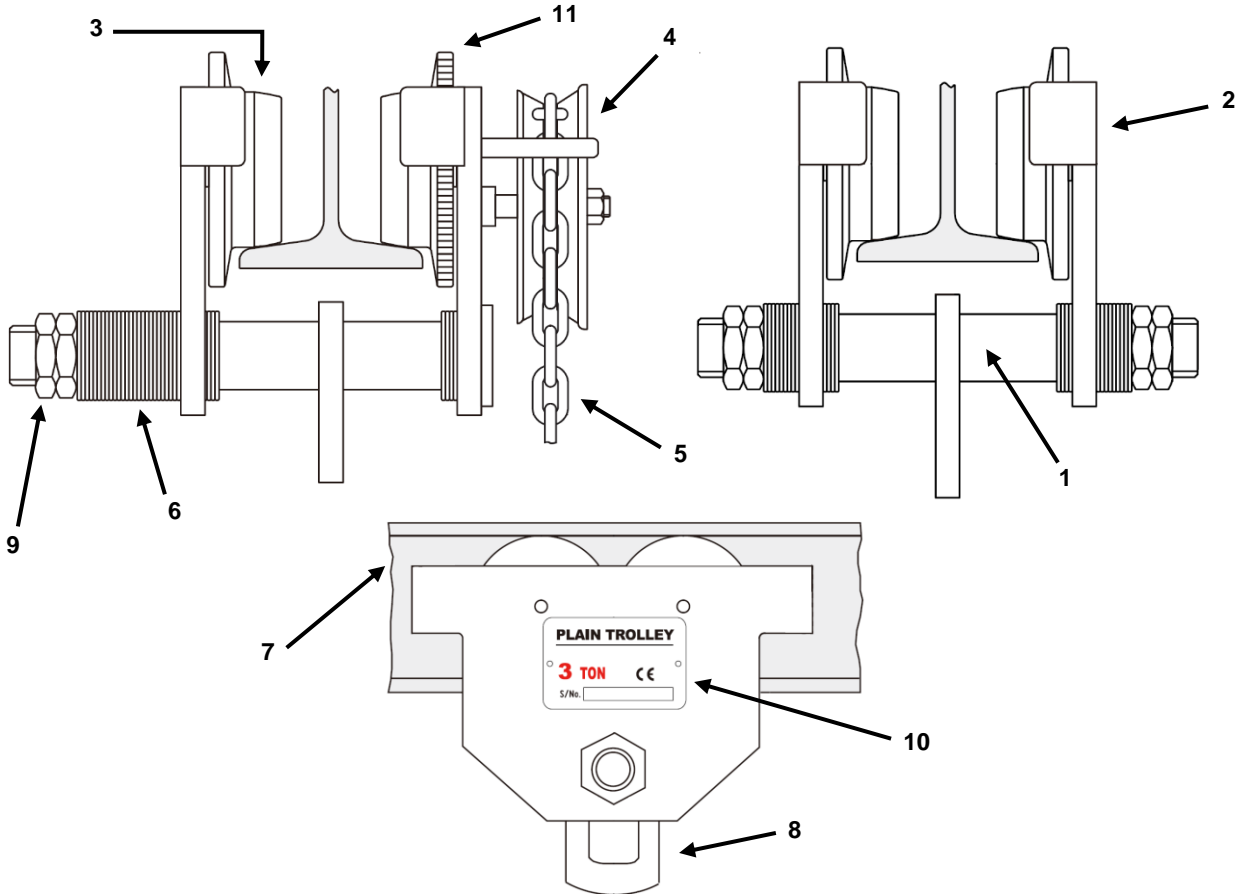
## Installation Instructions

1. Trolley must be installed on a beam with a minimum clearance (wheels to flange) of 1/16" to maximum of 1/8". Reference to "F" on both sides of the beam.
2. To extend trolley width, remove nuts. Remove washers from center bolt and place on the inner side of the side plate. **Note:** There must always be at least one washer on either side of the side plates, as the hanger plate must always remain centered to the beam.
3. Once trolley width is spaced properly, install remaining washers on center bolt on the outside of the side plates. Install the nuts. **Do not over tighten the nuts.**
4. Re-check wheel clearance "F" and re-adjust if necessary.





## Technical Information:



## Description

1. Shaft (center bolt)	6. Washers
2. Side Plate	7. Beam
3. Wheel	8. Hanger Plate
4. Chain Wheel	9. Nuts
5. Hand Chain	10. Name Plate